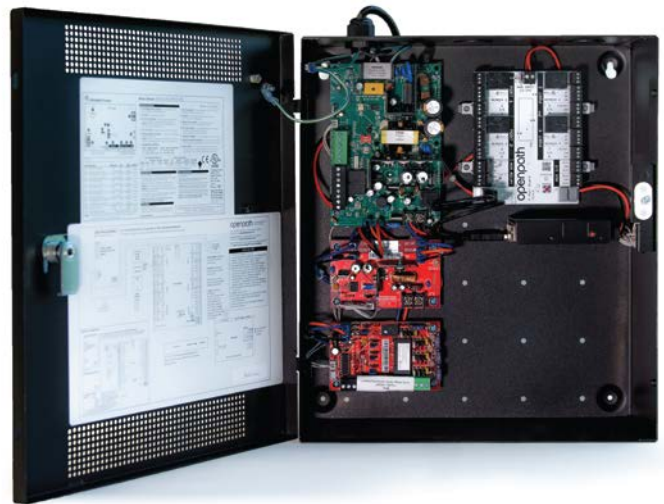


12/24V 4-Door Core Series Smart Hub

4-Door Controller

The Openpath Core Series Smart Hub is a modular access control unit that supports up to four Openpath Smart Readers. The Core Series Smart Hub features the Access Control Core (OP-ACC), that securely makes all entry decisions. The Core connects to expansion boards that include ports for Openpath Smart Readers, Request to Exit (REX) inputs, and Contact Sensors. The Core Series Smart Hub uses RS-485 wiring to connect to the Smart Readers and is powered by a built-in 12/24VDC power supply.



Features

- Internet connectivity to the Openpath access control cloud for system management and communication
- Stores all cloud configurations locally in order to remain fully functional in the event of an Internet outage
- Uses industry standard RS-485 signaling to communicate with Openpath readers over CAT 5/6 wiring
- Plug and play design allows for easy expansion and customization
- Includes port interfaces for 4 Relays, 4 Openpath Readers, 4 REX Sensors, and 4 Contact Sensors
- 2 auxiliary relays and 4 configurable auxiliary input pins provide extra outputs and allow additional sensors or Wiegand devices
- EOL monitoring with single or double termination on all REX, Contact, and Auxiliary inputs supported with user-installed 1k resistors
- Ships with LifeSafety Power enclosure for security and easy wall mounting
- Supports wireless configuration via the Openpath Admin App using Bluetooth
- Lifetime warranty

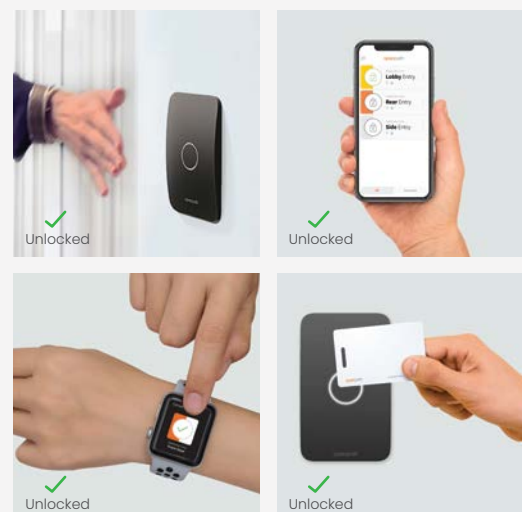
Specifications

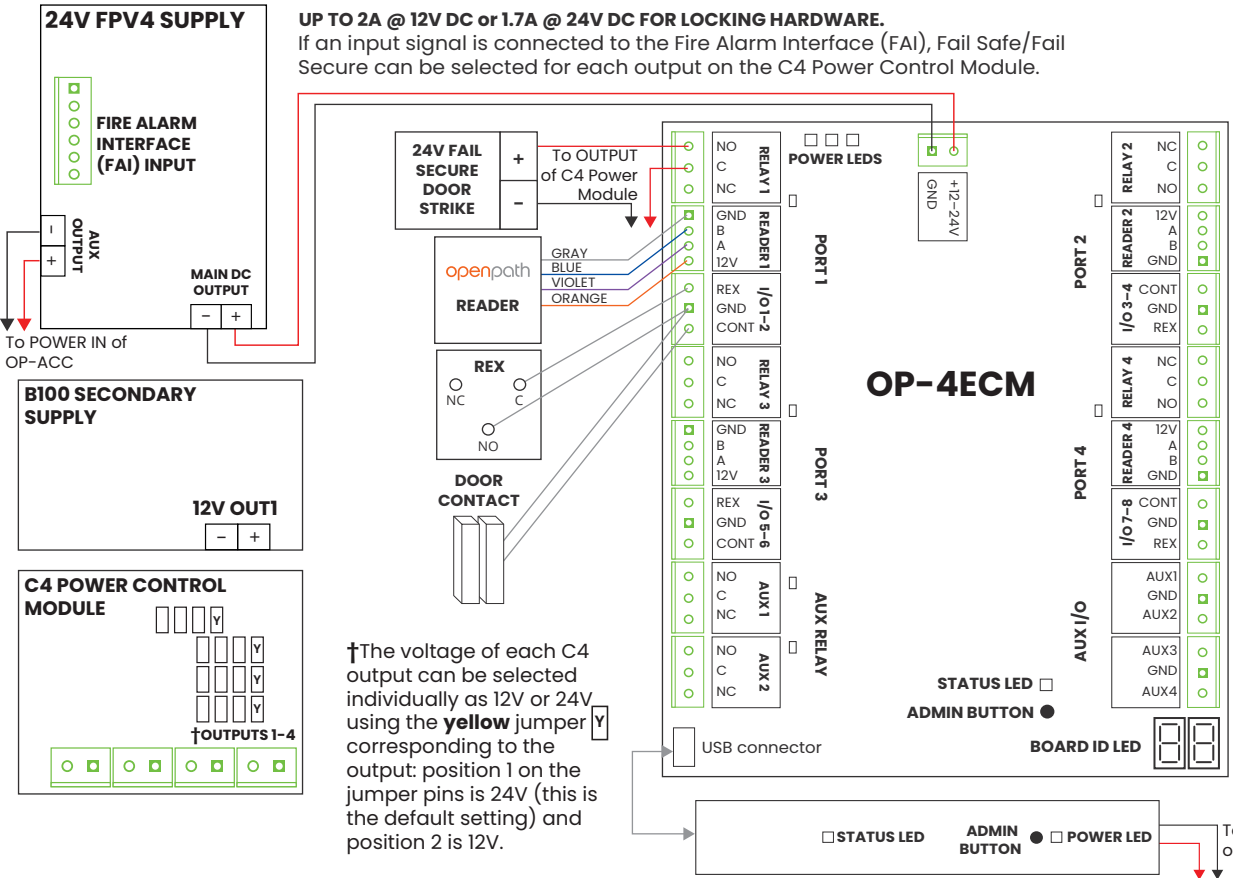
- Operating Voltage: 12-24VDC
- Operating Current:
 - 1.25A @ 24VDC (with 4 Openpath Readers)
 - 0.7A @ 24VDC (with no readers)
- Door Relays: 4 relays, 5A @ 24VDC (resistive)
- Auxiliary Relays: 2 relays, 1A @ 24VDC
- Openpath Readers: Up to 4 Openpath Readers
- REX and Contact Sensors: 4 REX and 4 contact sensor inputs with EOL monitoring, nominal 5VDC, 1kohm to each input
- Auxiliary Inputs: 4 input lines with EOL monitoring
- Enclosure Size: 14" H, 12" W, 4.5" D (356 x 305 x 114 mm)
- Weight: Approx 10 lbs (4.5 kg)
- Operating Temperature: 32° to 122°F (0° to 50°C)
- Operating Humidity: 5% to 85% relative, non-condensing
- Communication Ports: 10/100 baseT Ethernet, USB port
- Backup Battery: Use two 12VDC sealed lead acid (SLA) or gel cell batteries in series
- Compliance: FCC

Openpath Access

Openpath creates smart security solutions for the modern office. The company's flagship product, Openpath Access, combines sleek hardware with an app, enabling employees to enter the office using their smartphone. Unlike legacy systems, Openpath's software is cloud-based, meaning Access easily scales with your business and seamlessly integrates with platforms like G Suite and Azure AD.

Openpath's patented SurePath Mobile technology ensures reliability and quick entry via Bluetooth, Wi-Fi and LTE. With encryption at every level and powerful, user-level permissions, Openpath Access is both more secure and more dynamic than traditional access control systems. Openpath Access' streamlined, customizable features make office management easier than ever.





UP TO 2A @ 12V DC or 1.7A @ 24V DC FOR LOCKING HARDWARE.
If an input signal is connected to the Fire Alarm Interface (FAI), Fail Safe/Fail Secure can be selected for each output on the C4 Power Control Module.

FAIL SECURE hardware locks when power is interrupted

FAIL SAFE hardware unlocks when power is interrupted

Please refer to third party locking hardware wiring instructions.

*** Note:** Make sure to connect locking hardware to the required voltage by setting the jumpers on the C4 module.

†The voltage of each C4 output can be selected individually as 12V or 24V using the **yellow** jumper corresponding to the output: position 1 on the jumper pins is 24V (this is the default setting) and position 2 is 12V.